



MINDFULNESS
21/22AW

sh|lead



Being conscious, being aware of the ecological environment around us.

A mental state achieved by focusing our awareness on the present moment, while calmly acknowledging and accepting the changing weather & severe natural.

In this group, we have developed some bio degradable qualities which are harmless to the environment. Felted, brush, stretch and light weight yarns in natural or recycle materials, providing the calm & comfortable mood to purify our mind and maintain the mindfulness.

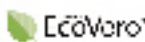
用意识觉察自己的思想与行为对生态环境的影响。全心全意的专注在当下，感知自己的身体、气候与大自然环境的严峻变化，着重意识形态的消费方式。

在这个系列里，我们研发出一些能够自然降解并且对环境不造成任何伤害的产品。还有用天然纤维和再生纤维做出又轻又舒适的弹性拉毛、毡绒效果、抒弹等产品。让你的家居环境充满了舒适平和的氛围，洗涤心灵，让我们保持正念。

Shildead aims to develop environmental friendly fashionable yarns in competitive price. In the 2021/22AW collection, we base on the concept of Traceable, Biodegradable & Health Protection, developed 3 groups of 100% environmental friendly (conscious) products :

夏利达致力于研发既环保又时尚并具有价格竞争力的纱线。在秋冬 2021/22 系列里，我们坚守着可追溯、可降解、健康防护的概念开发出三组 100% 生态保护意识的产品：

- 表示有分色卡 / Color Card Provided
- ★ 表示重点推广 / Special Recommendation



MINDFULNESS

正念







Being conscious and aware of the ecological environment around us.
用意识觉察自己的思想与行为对生态环境的影响。





WQW-XLD061A  


Y4362 2/40Ne 50Ecovero 50Tencel

WQW-XLD125C    

Y5396 2/32Ne 70Ecovero 30Acetate (Naia)


Y5610 1/38Nm 72Recycle Polyester
27Polyester 1Metallic

Y0218 2/40Ne 100Organic Cotton

WQW-XLD198 

Y5564 1/22Nm 58Recycle Rayon
42Organic Cotton

Y3736 1/70D 100Nylon

WQW-XLD199 

Y4898 1/31Nm 86Organic Cotton 14Nylon

WQW-XLD200   

Y5603 2/32Ne 70PLA 30Cotton



WQW-XLD128B

Y5393 1/24Nm 65Recycle Rayon 35Nylon



WQW-XLD201



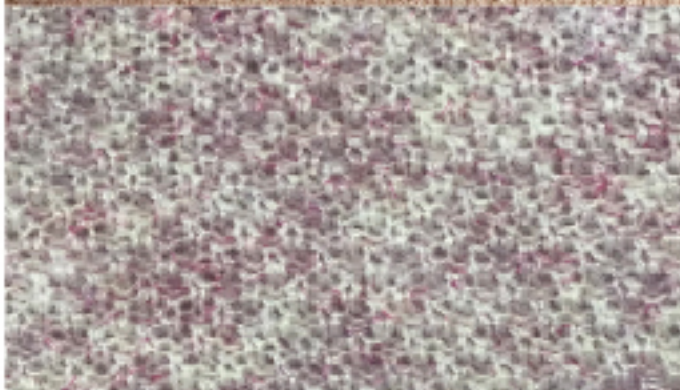
Y5247 2/48Nm 50BCI Cotton
28PBT 22Modal



WQW-XLD139A



Y5473 2/36Nm 63Ecovero 22PBT 15Wool



WQW-XLD202



Y5592 1/5Nm 60Recycle Polyester
30Polyester 4Alpaca 4Wool
1Viscose 1Acrylic



WQW-XLD113A



Y5423 1/13Nm 30Nylon (Terryl) 27Acrylic
25Polyester 10Wool 5Yak 3Spandex



WQW-XLD045B



Y5103 1/16Nm 50Recycle Polyester
38Acrylic 8Wool 4Spandex

WQW-XLD203



Y4880 1/8.5Nm 48Acrylic 25BCI Cotton
23Nylon 4Spandex

WQW-XLD204



Y4401 1/6.5Nm 38Acrylic
30Recycle Polyester
25Polyester 5Wool 2Spandex

WQW-XLD205



Y5593 1/9Nm 44Recycle Polyester
42Acrylic 6Alpaca 6Wool
2Viscose
Y3736 1/70D 100Nylon

WQW-XLD104B



Y5407 1/6Nm 44Recycle Polyester 40Nylon
6Wool 6Alpaca 2Acrylic 2Viscose

Wuxi Shilead Spinning Science & Technology Co.,Ltd.

无锡夏利达纺织科技有限公司

Wuxi Xialida Dyeing Co.,Ltd.

无锡夏利达漂染有限公司

Myanmar Yarn & Fabric Technology Company Limited



Shanghai 上海

🏠 T1-308,No.1 Lane168 (Vanke Zone 1),
Taihong Rd, Minhang District,Shanghai,China
上海市闵行区泰虹路168弄(万科时一区)1号楼308室
Postal Code:201108

☎ 021-64466431 📠 021-64466491

Myanmar 緬甸

🏠 No. 1420(Ka), Sit Pin Sate Kwin Plot No. 23+25
Sit Pin Sate Village Tract. Bago Township,
Bago Region, Myanmar

☎ +95-9-408198990

Wuxi 无锡

🏠 Bashi Dongfangqiao Village, Xibei Town,
Xishan District, Wuxi, China
无锡市锡山区锡北镇(八士)东房桥村
Postal Code:214193

☎ 0510-83801017 📠 0510-83805370



HEEDFULNESS
21/22AW

shilead



Complete and focused attention to avoid the risk of damage to the ecological environment.

Staying aware of our responsibilities, the act of taking notice from the raw materials, production process to the logistic of a product, considered decisions or come to sensible conclusions on the supply chains we chosen for a piece of garment.

Be thoughtful and sensitive towards our environment.

In this group, we widely use traceable recycled Polyester/Acrylic/...in creating fashionable tape, feather, boucles, core spun and many multi-color effect yarns. Be fashion and be harmfulless to the ecological environment.

对生态环境平衡保持觉心，每一个消费决定都经过细心的衡量，了解从原料、生产过程到物流运输等，整个供应链都符合环保的概念，不会破坏生态的平衡。在这一组，我们广泛使用可追溯的再生纤维，如再生涤纶和再生腈纶，与天然纤维结合，开发出点子纱、带子纱、细密羽毛、紧密圈圈、包心和一些颜色效果丰富的时尚产品，使得我们在追求时尚之余对环境生态平衡不造成过多的伤害。

Shildead aims to develop environmental friendly fashionable yarns in competitive price. In the 2021/22AW collection, we base on the concept of Traceable, Biodegradable & Health Protection, developed 3 groups of 100% environmental friendly (conscious) products :

夏利达致力于研发既环保又时尚并具有价格竞争力的纱线。在秋冬 2021/22 系列里，我们坚守着可追溯、可降解、健康防护的概念开发出三组 100% 生态保护意识的产品：

-
- 表示有分色卡 / Color Card Provided
 - ★ 表示重点推广 / Special Recommendation



HEEDFULNESS 觉心



Be thoughtful and sensitive,
avoid the risk of the damage to the ecological environment.

对生态环境平衡保持觉心，不再破坏生态的平衡。





WQW-XLD206



Y2557 1/8Nm 100Recycle Polyester

Y0208 2/21Ne 100Organic Cotton

WQW-XLD207



Y5569 1/6Nm 100Recycle Polyester

Y2481 2/48Nm 52Viscose 28PBT 20Nylon

WQW-XLD208



Y4957 1/8Nm 32Recycle Acrylic 32Acrylic

20Nylon 16Wool

WQW-XLD209



Y5577 1/9.6Nm 100Recycle Polyester

Y1053 1/10Nm 40Acrylic 30Mohair 30Nylon

WQW-XLD210



Y5504 1/4.5Nm 52Recycle Polyester

34Acrylic 14Nylon

Y0208 2/21Ne 100 Organic Cotton



WQW-XLD211



Y5618 1/4Nm 38Cotton 26Nylon
26Recycle Polyester 6Acrylic
2Wool 1Viscose 1Polyester



WQW-XLD010A



Y4387 1/3.2Nm 53Recycle Polyester
23Polyester 21Acrylic 3Wool



WQW-XLD212



Y5619 1/3Nm 66Polyester
25Recycle Polyester 5Acrylic
2Wool 1Viscose 1Metallic



WQW-XLD213



Y0257 1/4.5Nm 100Recycle Polyester
Y1053 1/10Nm 40Acrylic 30Mohair 30Nylon

WQW-XLD148A



Y5310 1/2.7Nm 55Polyester
27Recycle Polyester 18Acrylic



WQW-XLD214



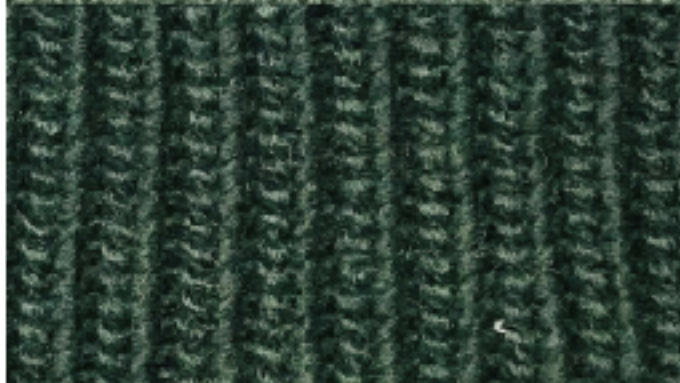
Y4266 2/24Nm 50Recycle Polyester
35Acrylic 15Wool



WQW-XLD041B



Y4232 2/28Nm 60Recycle Polyester
40Acrylic



WQW-XLD086B



Y5321 1/3.2Nm 65Acrylic
25Recycle Acrylic 10Wool



WQW-XLD209A



Y5577 1/9.6Nm 100Recycle Polyester
Y4232 2/28Nm 60Recycle Polyester
40Acrylic



WQW-XLD215



Y4275 2/8Nm 50Recycle Polyester
35Acrylic 10Nylon 5PBT
Y4232 2/28Nm 60Recycle Polyester
40Acrylic



Wuxi Shilead Spinning Science & Technology Co.,Ltd.

无锡夏利达纺织科技有限公司

Wuxi Xialida Dyeing Co.,Ltd.

无锡夏利达染整有限公司

Myanmar Yarn & Fabric Technology Company Limited



Shanghai 上海

📍 T1-308, No.1 Lane168 (Vanke Zone 1),
Taihong Rd, Minhang District, Shanghai, China
上海市闵行区泰虹路168弄(万科时一区)1号楼308室
Postal Code:201106

☎ 021-64466431 📠 021-64466491

Myanmar 緬甸

📍 No. 1420(Ka), Sit Pin Sate Kwin Plot No. 23+25
Sit Pin Sate Village Tract. Bago Township,
Bago Region, Myanmar

☎ +95-9-408198990

Wuxi 无锡

📍 Bashi Dongfangqiao Village, Xibei Town,
Xishan District, Wuxi, China
无锡市锡山区锡北镇(八士)东房桥村
Postal Code:214193

☎ 0510-83801017 📠 0510-83805370





ALERTNESS
21/22AW

sh|lead



Being meticulous, being precise & particular through different experiments & testings, aim for a better future by the high technology.

Caution & care about possible dangers from our environment: Anti virus, anti bacterial, thermal, Moisture-wicking...

In this group, we have developed many functional yarns, which includes anti bacterial, anti virus, naia, sorona...

All materials are dealt with extra care in spinning & dyeing, and certificated by the related professional associations.

运用高科技产品对我们严峻的环境做出防护。严谨地透过各种的试验和检测，研发出能达到身体防护作用的产品。

这个系列里面我们开发了许多功能性的纱线，有对抗环境的防护产品如：抗菌和抗病毒，也有对身体做出保护作用的吸湿排汗和恒温效果。此系列产品经过了专业的第三方测试和认证。

Shildead aims to develop environmental friendly fashionable yarns in competitive price. In the 2021/22AW collection, we base on the concept of Traceable, Biodegradable & Health Protection, developed 3 groups of 100% environmental friendly (conscious) products :

夏利达致力于研发既环保又时尚并具有价格竞争力的纱线。在秋冬 2021/22 系列里，我们坚守着可追溯、可降解、健康防护的概念开发出三组 100% 生态保护意识的产品：

-
- 表示有分色卡 / Color Card Provided
 - ★ 表示重点推广 / Special Recommendation



ALERTNESS

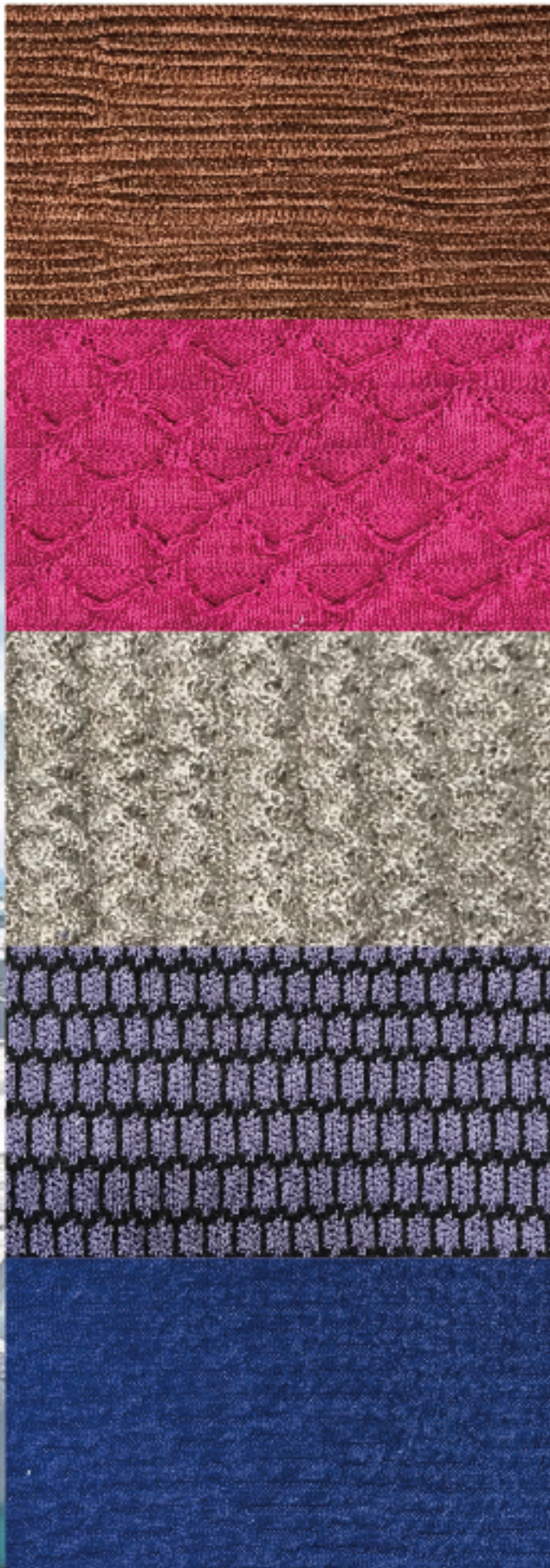
警觉



Caution & care about possible dangers from our environment
by the help of high technology.

运用高科技产品对我们严峻的环境做出防护。





WQW-XLD157A



Y5478 2/32Ne 60Tencel 40Polyester (Cocona)

WQW-XLD158A



Y5481 2/30Ne 60BCI Cotton
40Polyester (Cocona)

WQW-XLD216



Y5474 1/17.8Nm 50Recycle Polyester
25Viscose 25Graphene Nylon

WQW-XLD122D



Y5397 2/32Ne 70Tencel 30Acetate (Naia)
Y3736 1/70D 100Nylon

WQW-XLD217



Y5548 2/30Ne 50Recycle Polyester
50Acetate (Naia)



WQW-XLD121B



Y5414 2/50Nm 72EcoCosy (Anti-bacterial)
28PBT



WQW-XLD130A



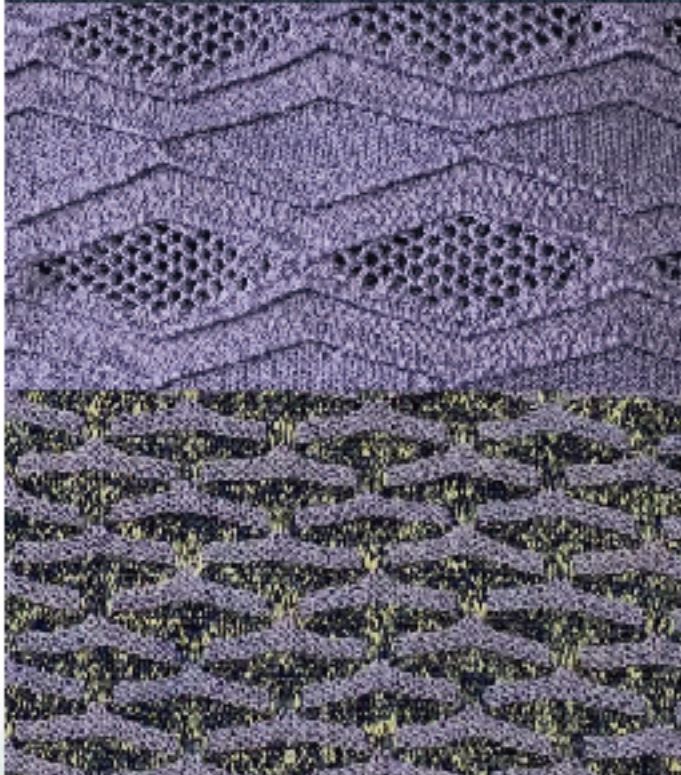
Y5428 3/40Ne 60Cotton
40EcoCosy (Anti-bacterial)



WQW-XLD218



Y4968 2/32Ne 92EcoCosy (Anti-bacterial)
8Wool
Y3736 1/70D 100Nylon



WQW-XLD151A



Y5425 2/40Ne 50EcoCosy (Anti-bacterial)
50Recycle Polyester (Moisture-wicking)

WQW-XLD219



Y5576 1/22.2Nm 61Recycle Polyester
39Polyester
Y5414 2/50Nm 72EcoCosy (Anti-bacterial)
28PBT



WQW-XLD175



Y5545 2/30Ne 50EcoCosi (Anti-bacterial)
50Recycle Polyester
(Anti-Virus,Moisture-wicking)



WQW-XLD160A



Y5485 2/30Ne 60BCI Cotton 40Nylon (Terry)
Y0218 2/40Ne 100Organic Cotton



WQW-XLD129A



Y5384 2/32Nm 70Acrylic
25Sorona 5RWS Wool



WQW-XLD220



Y5557 2/16Ne 40Cotton 30Acrylic
30EcoCosi (Anti-bacterial)



WQW-XLD089A



Y5329 2/40Ne 50Cotton
50Polyester (Moisture-wicking)

)
)



Wuxi Shilead Spinning Science & Technology Co.,Ltd.

无锡夏利达纺织科技有限公司

Wuxi Xialida Dyeing Co.,Ltd.

无锡夏利达染整有限公司

Myanmar Yarn & Fabric Technology Company Limited



Shanghai 上海

📍 T1-308, No.1 Lane168 (Vanke Zone 1),
Taihong Rd, Minhang District, Shanghai, China
上海市闵行区泰虹路168弄(万科时一区)1号楼308室
Postal Code:201106

☎ 021-64466431 📠 021-64466491

Myanmar 緬甸

📍 No. 1420(Ka), Sit Pin Sate Kwin Plot No. 23+25
Sit Pin Sate Village Tract. Bago Township,
Bago Region, Myanmar

☎ +95-9-408198990

Wuxi 无锡

📍 Bashi Dongfangqiao Village, Xibei Town,
Xishan District, Wuxi, China
无锡市锡山区锡北镇(八士)东房桥村
Postal Code:214193

☎ 0510-83801017 📠 0510-83805370

